

2/11/2020

The BoD agreed to allow any home in the community to use any of the original 10 color combinations (5 Schemes) that DR Horton used in Del Tierra, as well as we expanded allowing 2 more color combinations (Scheme #6). These color schemes will be available thru our management company.

Conditional use of these colors are :

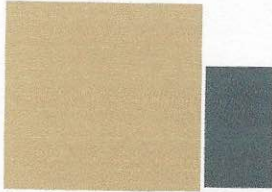
- The entire color combination must be used as a group with no mixing from one combination to another.
- If changing from the original color combination the entire new combination must be used at the same time.
- No home may use a color scheme of any home within 1 home in any direction of their home (excluding across a pond or conservatory).

The following are the approved Paint Palettes

DNH Del Tiana
Express Homes - Exterior Schemes

**** Trim to be SW 7012 CREAMY****

Scheme #1



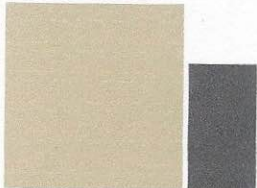
Body: SW 6122 CAMELBACK
Accent: SW 7625 MOUNT ETNA
Stone: PA NEW ENGLAND

Roof Shingles



Weatherwood

Scheme #2



Body: SW 7533 KHAKI SHADE
Accent: SW 6272 PLUM BROWN
Stone: PA NEW ENGLAND

Scheme #3



Body: SW 7036 ACCESSIBLE BEIGE
Accent: SW 7062 ROCK BOTTOM
Stone: BUCK EYE

Scheme #4



Body: SW 6164 SVELTE SAGE
Accent: SW 6258 TRICORN BLACK
Stone: BUCKEYE

Scheme #5



Body: SW 6120 BELIEVABLE BUFF
Accent: SW 7585 SUNDRIED TOMATO
Stone: PA NEW ENGLAND

Express Homes - Exterior Schemes

**** Trim to be CLW 1033W Forgetmenot****



Scheme #1



Body: CL 2794D Burlap
Accent: CL 3076A Altamira

Roof Shingles



Weatherwood

Scheme #2



Body: CL 2893M Knapweed
Accent: CL 2487N Barn Owl

Scheme #3



Body: CL 2922W White Wood
Accent: CLV 1136N Crave

Scheme #4



Body: CL 2944M Mint Slush
Accent 1: CL 3127N Black Russian

Scheme #5



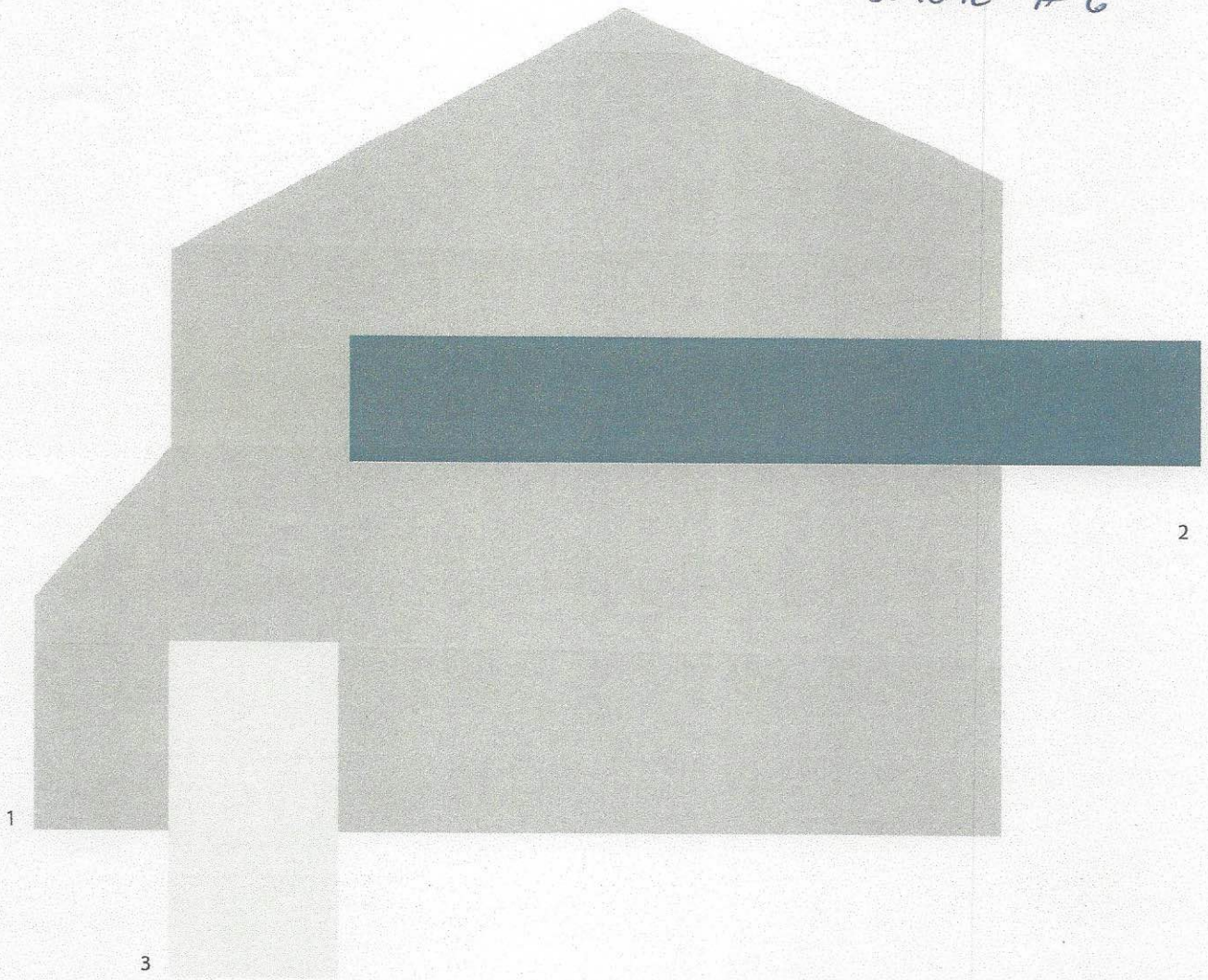
Body: CL 2782W Corduroy
Accent 1: CLC 1290N Cowabunga

#1

Del Tierra

PRE-APPROVED

Scheme #6



- 1 Body
- 2 Shutters
- 3 Trim

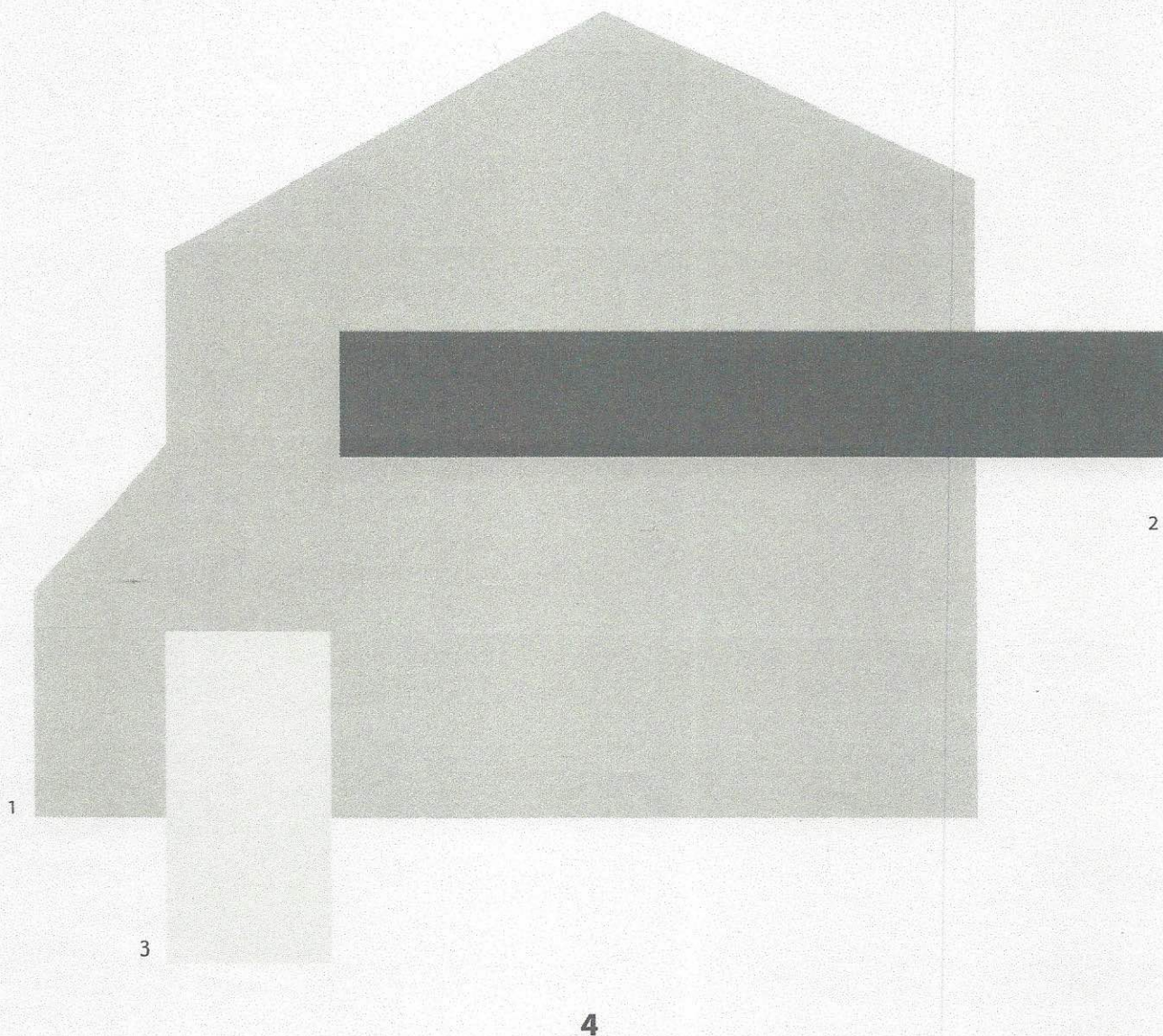
SW 2832 Colonial Revival Gray
SW 9176 Dress Blues
SW 7008 Alabaster

SHERWIN-WILLIAMS.
HOMESCAPES™

#2

Del Tierra

Scheme #6



- 1 Body
- 2 Shutters
- 3 Trim

SW 6205 Comfort Gray
SW 6258 Tricorn Black
SW 7008 Alabaster